

Radio Mobile - RF propagation simulation software.

About Radio Mobile

Radio Mobile software is a copyright of Roger Coudé VE2DBE.



Roger Coudé.

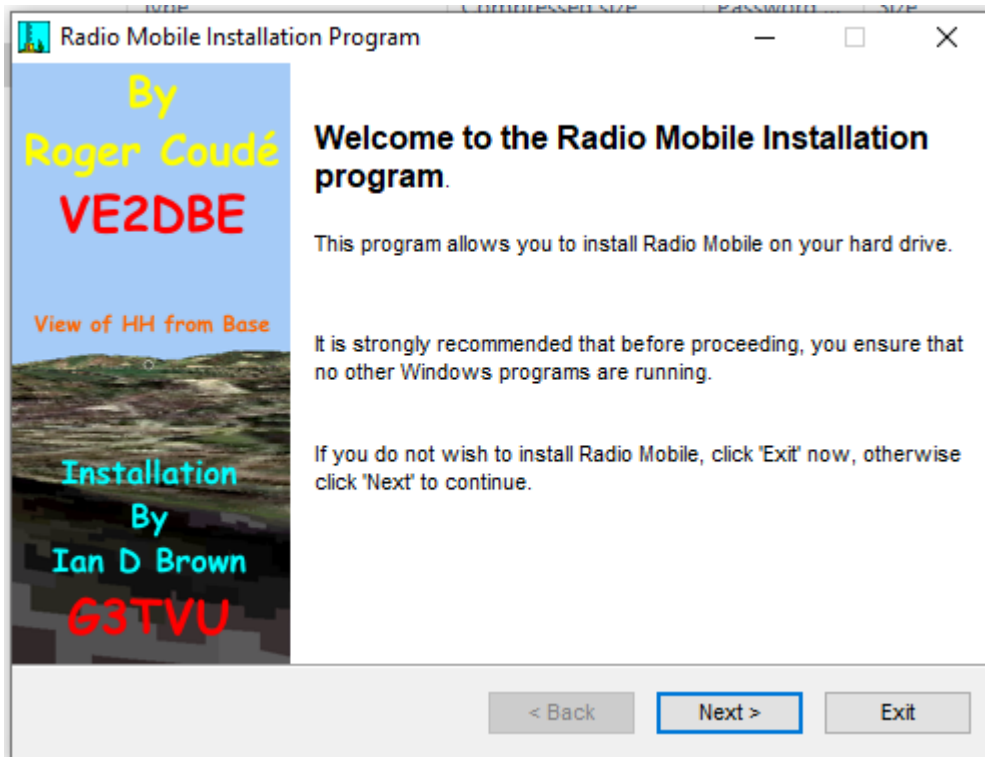
Radio Mobile is dedicated to amateur radio and humanitarian use.

Radio Mobile is free of charge but not open source. Although commercial use is not prohibited, the author cannot be held responsible for its usage.

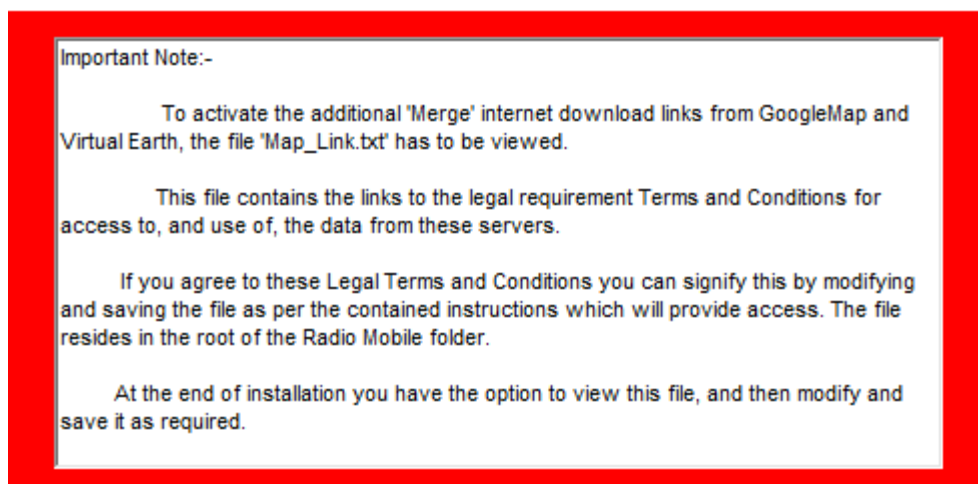
The outputs resulting from the program are under the entire responsibility of the user, and the user should conform to restrictions from external data sources.

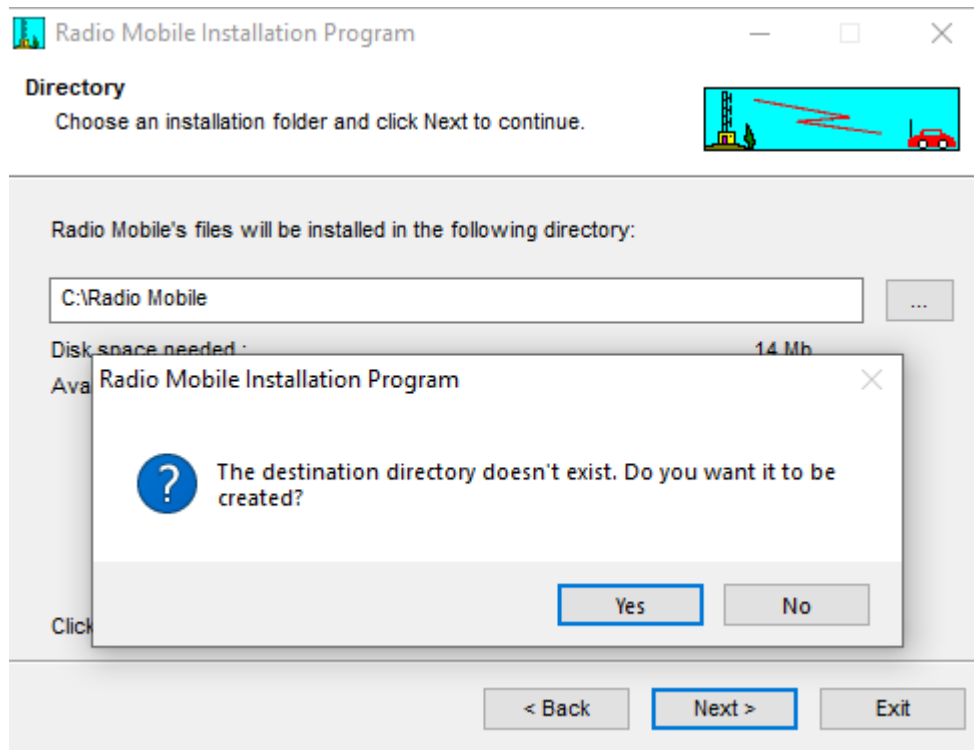
The authors website is here <http://radiomobile.pe1mew.nl/?Welcome...> however we are going to slip this and go straight to the windows installer by Ian D Brown, G3TVU

Radio Mobile Installer http://www.g3tvu.co.uk/Radio_Mobile_Setup.zip

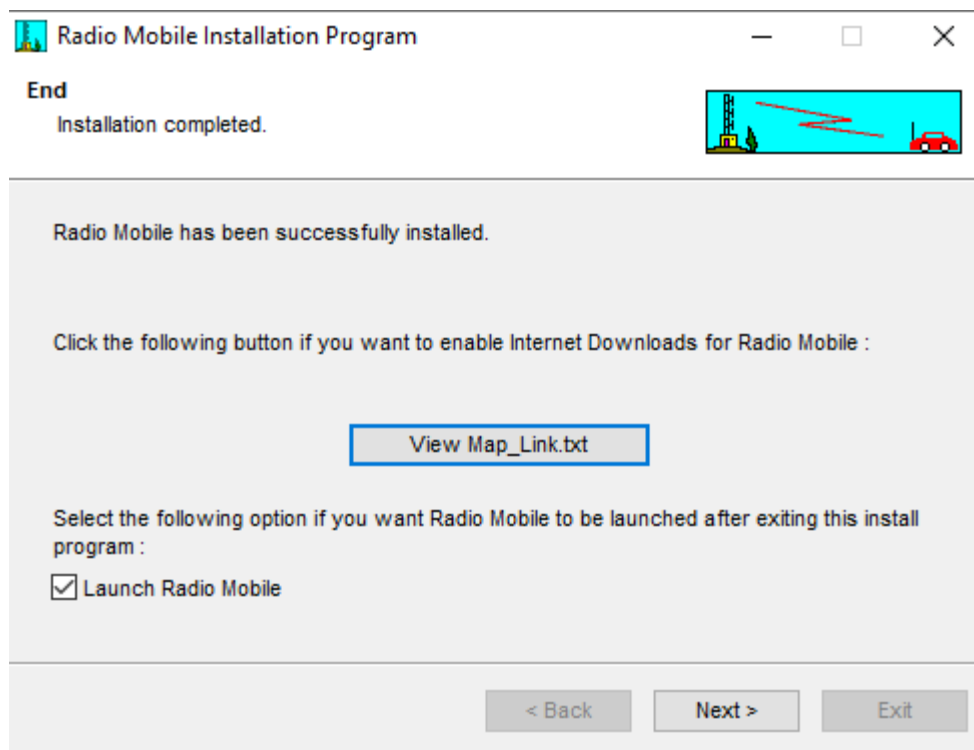


Continue the installation, you will see this window.





When you are presented with this screen you need to click the View Map_link.txt button



```
|'Radio Mobile restricted merge sources (this line for alternate OSM style server)
'virtualearth.net
'
```

```
'google.com
```

First read the links below for the terms and conditions of each service,
and if you agree to abide by these proceed.

For the Radio Mobile program to enable access to each of the servers above,
the apostrophes must be removed, and the file saved.

Doing so, you will have access to the services subject to their copyright and usage conditions:

Pour accéder à chacun de ces serveurs il faut enlever l'apostrophe au début de la ligne.
Noter que ce faisant, vous accédez à des services qui sont sujets à des droits d'auteur.
Veuillez consulter les liens suivants pour connaître les conditions qui s'appliquent:

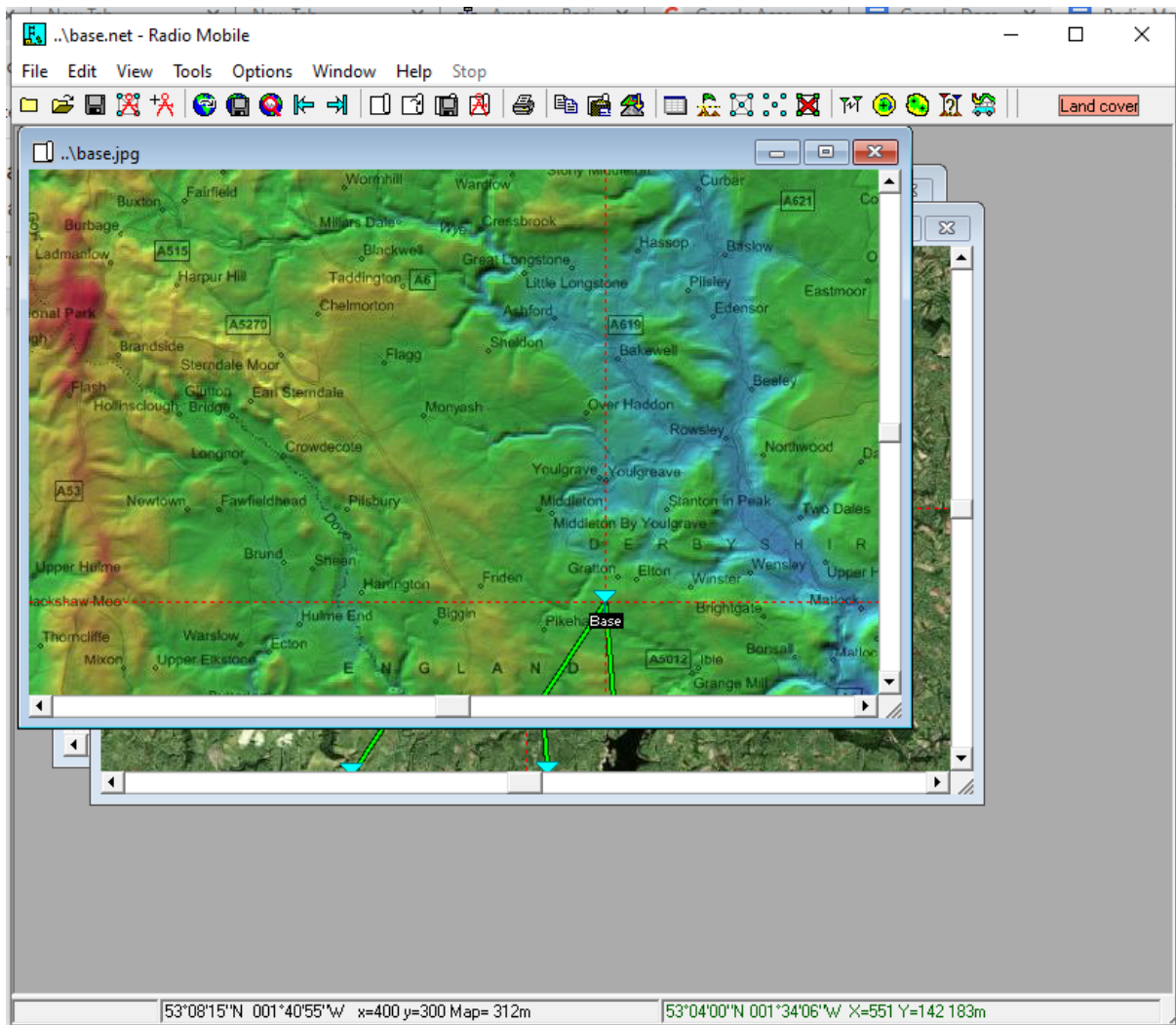
Radyo Mobil yazılımının menüsündeki (Düzeltilmiş resim ekle) bölümünde, yukarıdaki
sunuculardaki haritaları da kullanabilmeniz için, yukarıda sıralanan adreslerin
başında bulunan apostrof (') karakterini silmeniz ve bu dosyayı yine aynı isimle
saklamanız gerekmektedir.

Bu şekilde telif hakkı olan bu servislere de erişme hakkınız olacaktır.

Bu işlemi yaparak söz konusu verileri kullanmanız halinde aşağıdaki adreslerde
bulunan telif hakkı şartlarını kabul etmiş olacaksınız.

<http://www.microsoft.com/maps/product/terms.html>
<http://www.google.com/apis/maps/terms.html>

Read the terms and conditions at the links at the bottom of the text document, and then remove the apostrophes in front of virtualearth.net and google.com.



This is the first screen you will be presented with.

Open File, Network Properties

Networks properties [X]

Default parameters [Copy Net] [Paste Net] [Cancel] [OK]

List of all nets

- Base
- Net 2
- Net 3
- Net 4
- Net 5
- Net 6
- Net 7
- Net 8
- Net 9
- Net 10
- Net 11
- Net 12
- Net 13
- Net 14
- Net 15
- Net 16
- Net 17
- Net 18
- Net 19
- Net 20
- Net 21
- Net 22
- Net 23
- Net 24
- Net 25
- Net 26
- Net 27
- Net 28
- Net 29

Parameters | Topology | Membership | Systems | Style

Net name:

Minimum frequency (MHz):

Maximum frequency (MHz):

Polarization: Vertical Horizontal

Mode of variability: Spot Accidental Mobile Broadcast

Additional loss: City Forest

Surface refractivity (N-Units):

Ground conductivity (S/m):

Relative ground permittivity:

Climate: Equatorial Continental sub-tropical Maritime sub-tropical Desert Continental temperate Maritime temperate over land Maritime temperate over sea